



ONE YEAR LIMITED WARRANTY
(Valid in USA only)

HoMedics, Inc., guarantees this product free from defects in material and workmanship for a period of one year from the date of original purchase, except as noted below.

This HoMedics product warranty does not cover damage caused by misuse or abuse; accident; the attachment of any unauthorized accessory; alteration to the product; or any other conditions whatsoever that are beyond the control of HoMedics. This warranty is effective only if the product is purchased and operated in the USA. A product that requires modification or adaptation to enable it to operate in any country other than the country for which it was designed, manufactured, approved and/or authorized, or repair of products damaged by these modifications is not covered under warranty. HoMedics shall not be responsible for any type of incidental, consequential or special damages. All implied warranties, including but not limited to those implied warranties of fitness and merchantability, are limited in the total duration of one year from the original purchase date.

To obtain warranty service on your HoMedics product, either hand deliver or mail the unit and your dated sales receipt (as proof of purchase), postpaid, along with check or money order in the amount of \$10.00 payable to HoMedics, Inc. to cover handling.

Upon receipt, HoMedics will repair or replace, as appropriate, your product and return it to you, postpaid. If it is appropriate to replace your product, HoMedics will replace the product with the same product or a comparable product at HoMedics' option. Warranty is solely through HoMedics Service Center. Service of this product by anyone other than HoMedics Service Center voids warranty.

This warranty provides you with specific legal rights. You may have additional rights which may vary from state to state. Because of individual state regulations, some of the above limitations and exclusions may not apply to you.

For more information regarding our product line in the USA, please visit: www.homedics.com



The Color Cube™



Instruction Manual and Warranty Information

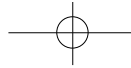
LT-300



Mail To:

**HoMedics
Service Center, Dept. 168
3000 Pontiac Trail
Commerce Township, MI
48390**

**e-mail:
cservice@homedics.com**



Experience the Benefit of Color Therapy

Thank you for purchasing The Color Cube, the HoMedics color therapy unit. This, like the entire HoMedics product line, is built with high-quality craftsmanship to provide you years of dependable service. We hope that you will find it to be the finest product of its kind.

The Color Cube will help to soothe your senses and balance your inner harmony. Lose yourself in the mesmerizing display of color and light while being transported to an environment of complete serenity. Only HoMedics offers you the luxury of these vital benefits with creative design, which adds beauty to any indoor environment.

IMPORTANT SAFETY INSTRUCTIONS:

When using an electrical appliance, basic precautions should always be followed, including the following:

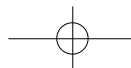
READ ALL INSTRUCTIONS BEFORE USING

DANGER - To reduce the risk of electric shock:

- Always unplug the appliance from the electrical outlet immediately after using and before cleaning.
- Do not reach for an appliance that has fallen into water. Unplug it immediately.
- Do not place or store appliance where it can fall or be pulled into a tub or sink. Do not place in or drop into water or other liquid.

WARNING - To reduce the risk of burns, fire, electric shock or injury to persons:

- An appliance should never be left unattended when plugged in. Unplug from outlet when not in use and before putting on or taking off parts or attachments.
- Close supervision is necessary when this appliance is used by or near children, invalids or disabled persons.
- Use this appliance only for its intended use as described in this manual. Do not use attachments not recommended by HoMedics; specifically any attachments not provided with the unit.



Caution: All servicing of this product must be performed by authorized HoMedics Service Personnel only.

- Never operate this appliance if it has a damaged cord, plug, cable or housing. If it is not working properly, if it has been dropped or damaged, return it to HoMedics Service Center for examination and repair.
- Keep cord away from heated surfaces.
- Never drop or insert any object into any opening.
- Do not operate where aerosol (spray) products are being used or where oxygen is being administered.
- Do not carry this appliance by the supply cord or use cord as handle.
- To disconnect, remove plug from outlet.
- This appliance is designed for indoor use only. Do not use outdoors.

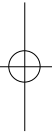
SAVE THESE INSTRUCTIONS

Caution – Please read all instructions carefully before operating.

- Never leave the appliance unattended, especially if children are present.
- Never cover the appliance when it is in operation.
- This unit should not be used by children without adult supervision.
- Always keep the cord away from high temperature and fire.
- To get the best effect, product must be placed on a flat surface.
- Do not lift, carry, hang, or pull the product by the power cord.
- If the adaptor sustains damage, you must stop using this product immediately and contact the HoMedics Service Center for repair. (See the warranty section for the HoMedics address.)

The Color Cube Features

- 24 vibrant colors create a fascinating display
- 3 color programs mesmerize and calm your spirit
 - Flow – Use for times of relaxation and meditation
 - Nomad – Ideal for moments of reflection
 - Geometrics – Engages focus and concentration
- 3 Adjustable speeds – Fast, Medium, Slow
- 15, 30, 60 minute auto-timer
- Table-top or wall-mount (hardware included)



Assembly

Unpack the product and check to make sure everything is included (Fig 1).

Table-top

Adhere the 4 foam adhesive feet to the bottom of the unit (Fig 2). This will help to stabilize the unit and prevent furniture from being scratched.

Wall-Mount

- Determine the location and height you are going to hang the unit.
NOTE: CHECK THE INTENDED WALL LOCATIONS FOR STRUCTURAL STRENGTH. INJURY TO PERSONS AND DAMAGE TO UNIT AND/OR MOUNTING SURFACE MAY RESULT IF UNIT IS PULLED FROM THE SURFACE. TO LIMIT THE LIKELIHOOD OF SUCH INJURY OR DAMAGE, MOUNT UNIT ON A STRUCTURAL WALL.
- Using the position of the mounting holes on the back of the unit, mark the position on the wall where the two holes will be drilled.
- Drill two holes that accommodate the anchors provided.
You may use a 7-32 inch drill bit.
- Insert the wall anchors into the two holes.
- Insert the screws into the wall anchors and tighten with a screwdriver.
- Place the unit on the wall.

Instructions for Use

- Attach the A/C adaptor jack to the base of the unit (Fig 1).
- Plug the cord into a 120V household outlet.
- To use the Color Program press the POWER button (Fig 3):
 - Once for FLOW
 - Twice for NOMAD
 - A third time for GEOMETRICS
 A corresponding LED will illuminate to indicate the program selected.
- To adjust the speed press the SPEED button (Fig 3):
 - Once for SLOW
 - Twice for MEDIUM
 - A third time for FAST
 A corresponding LED will illuminate to indicate the speed selected.
NOTE: When switching programs the speed of your choice will be retained until the power is turned off.

NOTE: THE UNIT WILL SHUT-OFF AFTER 90 MINUTES IF THE TIMER IS NOT SELECTED

- To turn on the auto-timer press the TIMER button (Fig 3):
 - Once for 15 minutes
 - Twice for 30 minutes
 - A third time for 60 minutes
 A corresponding LED will illuminate to indicate the time selected.
NOTE: When switching programs the time of your choice will be retained until the power is turned off.

- When finished, turn off The Color Cube by continuing to press the POWER button until no LED's are illuminated. **NOTE:** This unit has an auto shut-off. If the auto-timer feature has not been selected this unit will turn off after 90 minutes.

Maintenance

To Store: You may leave the unit on display, or you can store it in its box or a cool, dry place.

To Clean: Wipe off dust with a damp cloth. NEVER use liquids or abrasive cleansers to clean.

Figure 1

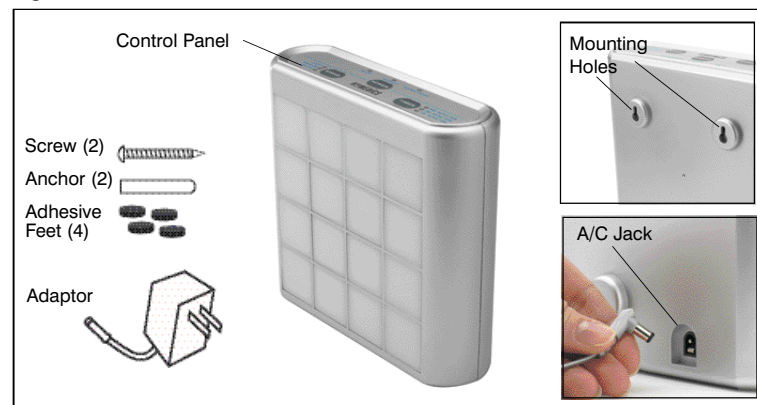


Figure 2

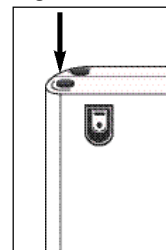


Figure 3

